

## Ridgeway tipping skip

### Safety notes

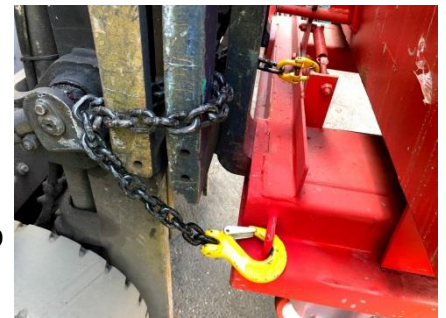
- It is the purchasers responsibility to ensure a risk assessment is completed by a competent person prior to using this tipping skip to control the risks and produce a safe system of work
- Operating instructions and your safe system of work must be followed at all times
- Always ensure the load is evenly distributed in the tipping skip
- Ensure the FLT is suitable for use with this tipping skip by checking the rating plate for the weight of the skip plus the load to be carried
- Ensure FLT forks are of the minimum length as indicated on the rating plate
- Keep clear of all potential crush areas at all times to avoid injury
- The skip must only be loaded onto the FLT when it is on the ground, in the closed position with the handle engaged and handle retainer secured
- During the tipping operation, never try to push the skip body over by hand

### Operating instructions

- Check the handle retainer is secured to the release handle as shown in photo



- Set the forks as wide as the base will allow
- Drive in the forks as far as the base will allow
- Raise the skip to a safe working height, then loop the safety retaining chain around the vertical section of forks ensuring it will not interfere with any moving parts and attach the hook to the base via the chain retainer with as little slack as possible as shown in photo in order to prevent forward movement of the skip



- With the skip raised off the ground to allow sufficient clearance to clear the floor, commence travel to the disposal area with full reverse tilt applied
- Whilst travelling make sure you have good forward vision
- At the discharge point apply hand brake, select neutral, return forks to level position and lower the skip to the ground, then remove the handle retainer
- Raise the skip high enough to fully discharge the load into disposal area
- Pull down the release handle to disengage the catch to allow the skip to be emptied
- If it is out of reach a solid release rod or chain can be used
- Keep hands clear of any other part of the skip whilst operating the release handle
- Apply forward tilt as this will assist the discharge of the load

- To return the skip to its closed position apply reverse tilt
- Never attempt to close the skip by pushing it against another object, as this may cause misalignment of the skip body
- Never attempt to close the skip by hand when in the raised position
- Lower to the ground to check the handle has re-engaged and secure the handle retainer

### Troubleshooting

- If the skip does not return to its closed position, lower to the ground and re-engage release handle by pulling down on rear of skip whilst stood at the side as shown in the pictures
- Ensure that the operator is away from any potential crush area



### Maintenance

- Any damage which could adversely affect operation must be reported to a supervisor who can then make the decision if it is necessary to contact Ridgeway for advice
- Check safety chain & hook for signs of damage
- When not being used, store the unit in the closed position with the handle engaged and handle retainer secured
- Check handle retainer for signs of damage

### Castors

- If this unit has been supplied with castors, these will need to be fitted before use
- Fixed castors should be fitted to the front and swivel to the rear of the skip
- Raise the skip off the floor, ensuring the skip is in the closed position with the handle engaged and handle retainer is secured
- Fit the castors to the castor plates using the fixings provided
- Working from the side of the skip, do not work directly underneath